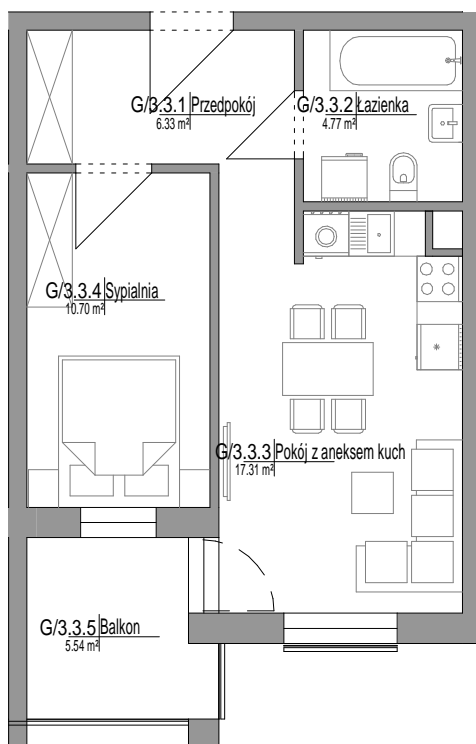


MIESZKANIE G/3.3

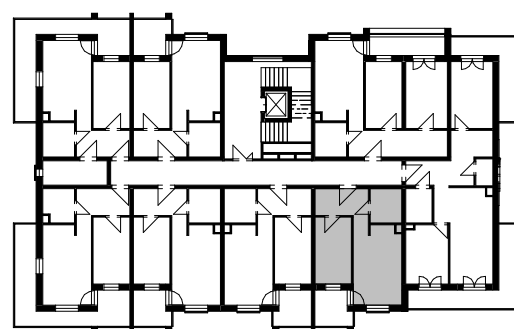
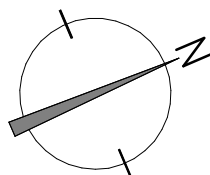
Skala: 1 : 100

Mieszkanie 2-pokojowe

39,11 m²



| NUMER | NAZWA | POW. |
|---------|----------------------|----------------------|
| G/3.3 | | |
| G/3.3.1 | Przedpokój | 6.33 m ² |
| G/3.3.2 | Łazienka | 4.77 m ² |
| G/3.3.3 | Pokój z aneksem kuch | 17.31 m ² |
| G/3.3.4 | Sypialnia | 10.70 m ² |
| | | 39.11 m ² |
| G/3.3.5 | Balkon | 5.54 m ² |
| | | 5.54 m ² |
| G/3.3 | | 44.64 m ² |



POŁOŻENIE MIESZKANIA NA RZUCIE PIĘTRA